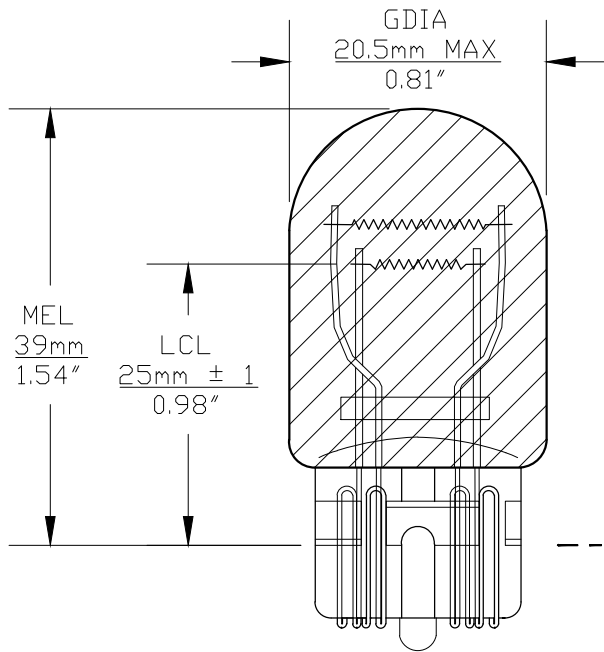


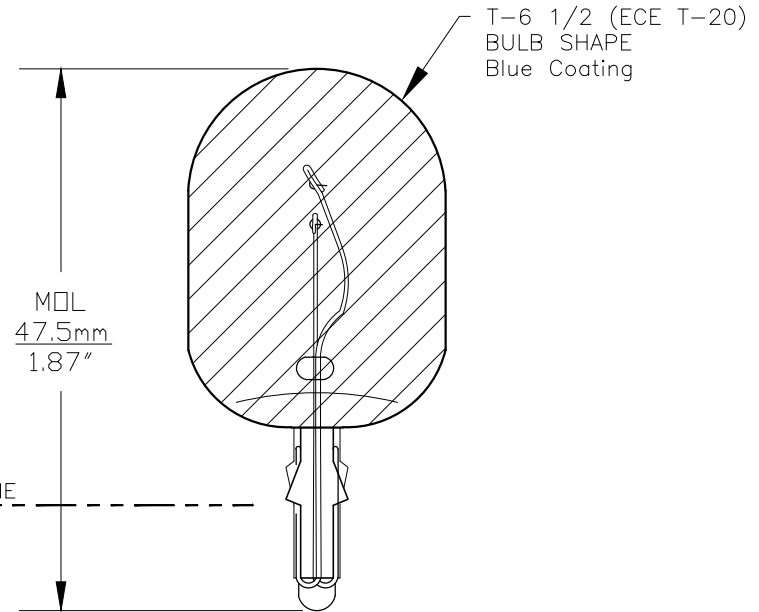


Since 1959

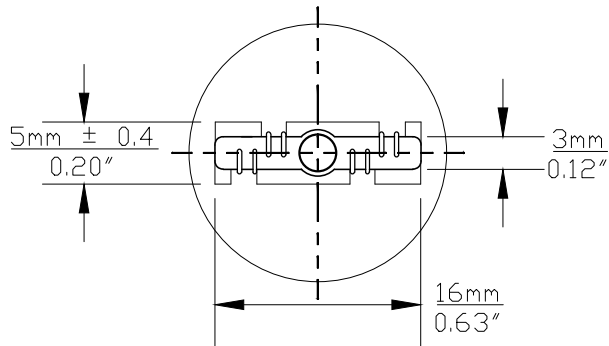
PART NO.	BASE TYPE	TEST VOLTS	DESIGN AMPS	MSCD	FILAMENT TYPE	AVERAGE LIFE HOURS	REVISIONS			
							REV #	DESCRIPTION	DATE	APPROVED
HIB7443 WM	Glass Wedge W3X16q	13.5V 13.5V	1.85±6% 0.445±10%	35±15% 2.78±20%	C-6 C-6	500 1000	1	ISSUED	06/07/2019	R.M..



0° VIEW



90° VIEW



BASE BOTTOM VIEW

T-6 1/2 (ECE T-20)
BULB SHAPE
Blue Coating

--- REFERENCE PLANE ---

Note: Made according to SAE specifications



UNLESS OTHERWISE SPECIFIED: DIMENSIONS ARE IN INCHES TOLERANCES		CEC INDUSTRIES LTD			
DECIMALS	ANGULAR	599 BOND STREET		LINCOLNSHIRE, IL 60069	
.XX ± .05	± 0.5°	TITLE LIGHT BULB NO. HIB7443 WM			
.XXX ± .010		SIZE A	FSCM NO.	DWG NO. HIB7443 WM	REV 1
FRACTIONAL	± 1/64	DESIGN	SCALE	PLOT SCALE	SHEET 1 OF 1
DRAWN ROSE MEDINA DATE 06/07/2019		MATERIAL FILE HIB7443WM.pdf DRAWING NOT TO SCALE			