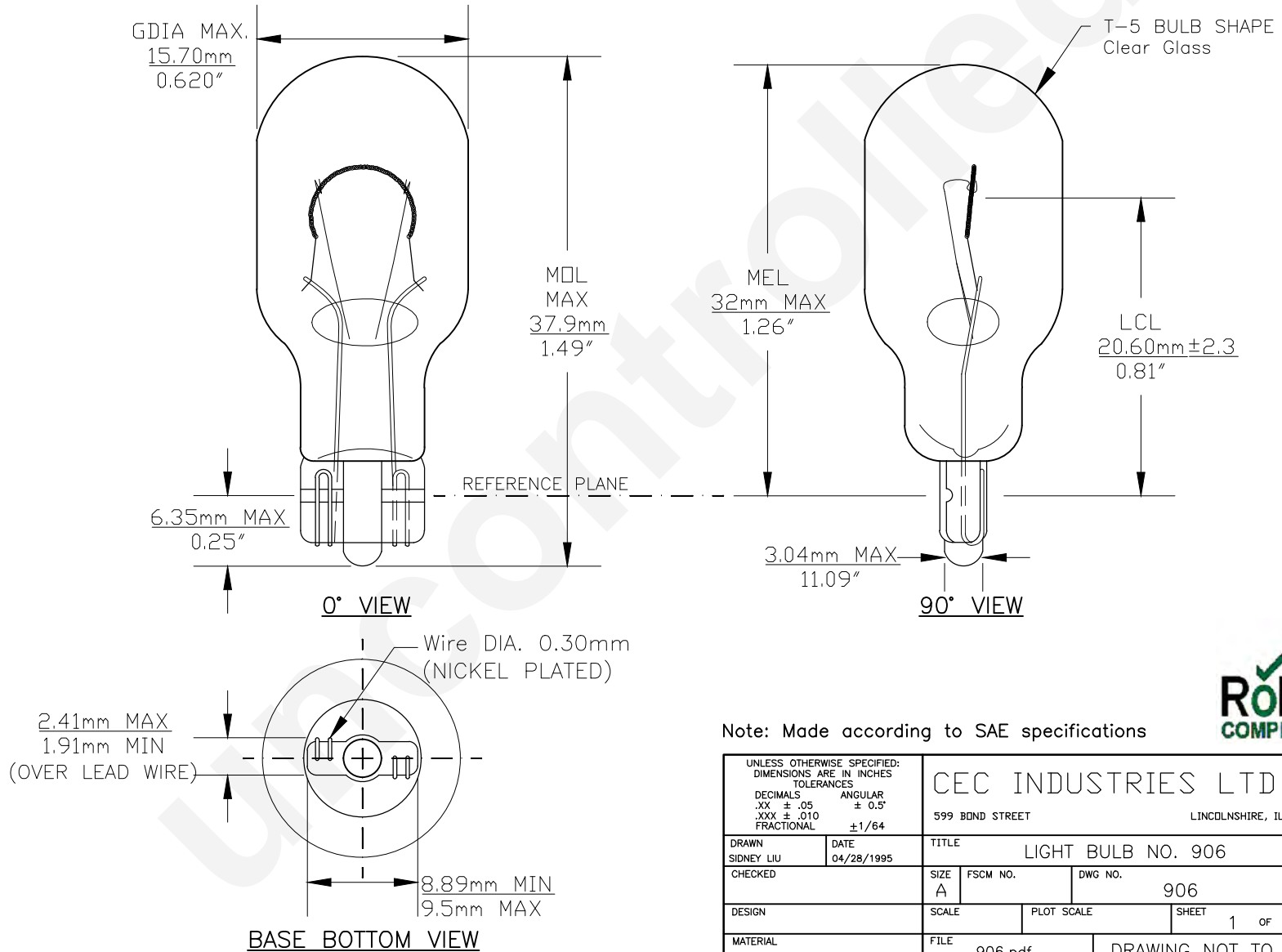




Since 1959

PART NO.	BASE TYPE	DESIGN VOLTS	DESIGN AMPS	MSCD	FILAMENT TYPE	AVERAGE LIFE HOURS	REVISIONS			
							REV #	DESCRIPTION	DATE	APPROVED
906	Glass Wedge (T-5) W2.1x9.2d	13.0V	0.69±10%	6.0±15%	C-2F	1,000	1	VERIFIED DIMENSIONS ACCORDING TO SAE STANDARD	11/07/2003	A.S.
							2	CORPORATION ADDRESS MOVING CHANGE	09/08/2004	S.L.
							3	ADDITION OF BOTTOM VIEW	01/27/2006	D.C.



Note: Made according to SAE specifications



UNLESS OTHERWISE SPECIFIED: DIMENSIONS ARE IN INCHES TOLERANCES		CEC INDUSTRIES LTD	
DECIMALS	ANGULAR	599 BOND STREET LINCOLNSHIRE, IL 60069	
.XX ± .05	± 0.5°		
.XXX ± .010			
FRACTIONAL	± 1/64		
DRAWN SIDNEY LIU	DATE 04/28/1995	TITLE LIGHT BULB NO. 906	
CHECKED	SIZE A	FSCM NO.	DWG NO. 906
DESIGN	SCALE	PLOT SCALE	REV 3
MATERIAL	FILE 906.pdf	SHEET 1 OF 1	
		DRAWING NOT TO SCALE	