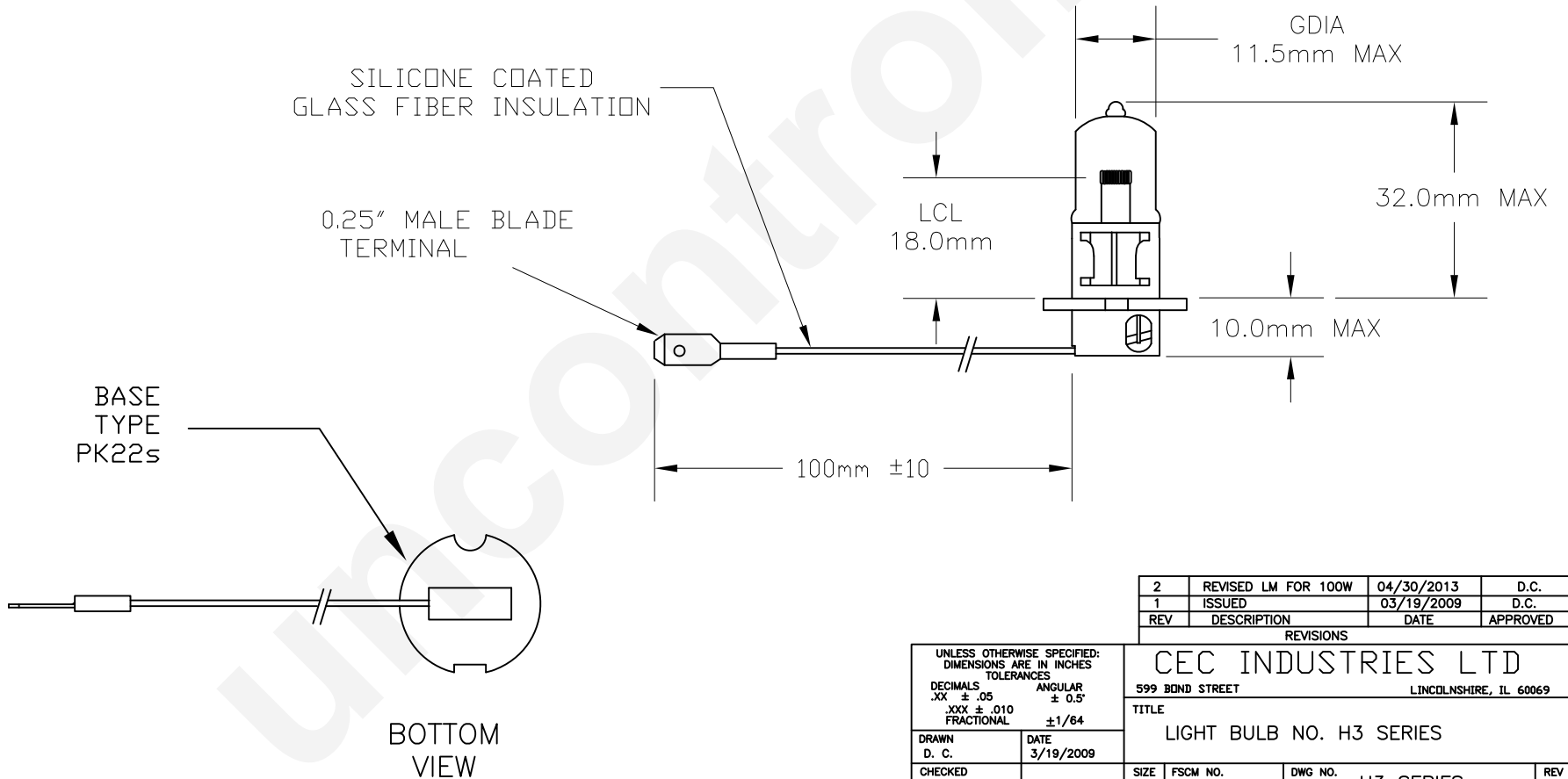


PART NUMBER	RATED VOLTS	AVERAGE LIFE HOURS	TEST VOLTAGE	WATTS @ TEST VOLTAGE	LUMENS @ TEST VOLTAGE
H3 25W	12	400	13.2	33 MAX	550±15%
H3 35W	12	400	13.2	43 MAX	750±15%
H3 35W 24V	24	400	28	43 MAX	650±15%
H3 55W	12	400	13.2	68 MAX	1450 ±15%
H3 55W LL	12	800	13.2	68 MAX	1450 ±15%
H3 55W HD	12	400	13.2	68 MAX	1450 ±15%
H3 55W 6V	6	300	6.3	63 MAX	1050±15%
H3 55W 36V	36	250	36	68 MAX	1450 ±15%
H3 55W 48V	48	250	48	68 MAX	1750 ±15%
H3 24V/65WLL	24	1,000	24	78 MAX	1300 ±15%
H3 70W 24V	24	400	28	84 MAX	1750 ±15%
H3 100W	12	150	13.2	85 MAX	1850 ±15%
H3 130W	12	50	13.2	116 MAX	2600 ±15%

FILAMENT TYPE: C-6  
BASE TYPE: PK22s



REV	DESCRIPTION	DATE	APPROVED
2	REVISED LM FOR 100W	04/30/2013	D.C.
1	ISSUED	03/19/2009	D.C.

REVISIONS

UNLESS OTHERWISE SPECIFIED:  
DIMENSIONS ARE IN INCHES  
TOLERANCES

DECIMALS	ANGULAR
.XX ± .05	± 0.5°
.XXX ± .010	
FRACTIONAL	±1/64

**CEC INDUSTRIES LTD**  
599 BOND STREET LINCOLNSHIRE, IL 60069

TITLE			
LIGHT BULB NO. H3 SERIES			
SIZE	FSCM NO.	DWG NO.	REV
A		H3 SERIES	2
SCALE	PLOT SCALE	SHEET 1 OF 1	
MATERIAL	FILE	DO NOT SCALE DRAWING	
	H3 SERIES.dwg		

DRAWN	DATE
D. C.	3/19/2009
CHECKED	
DESIGN	
MATERIAL	