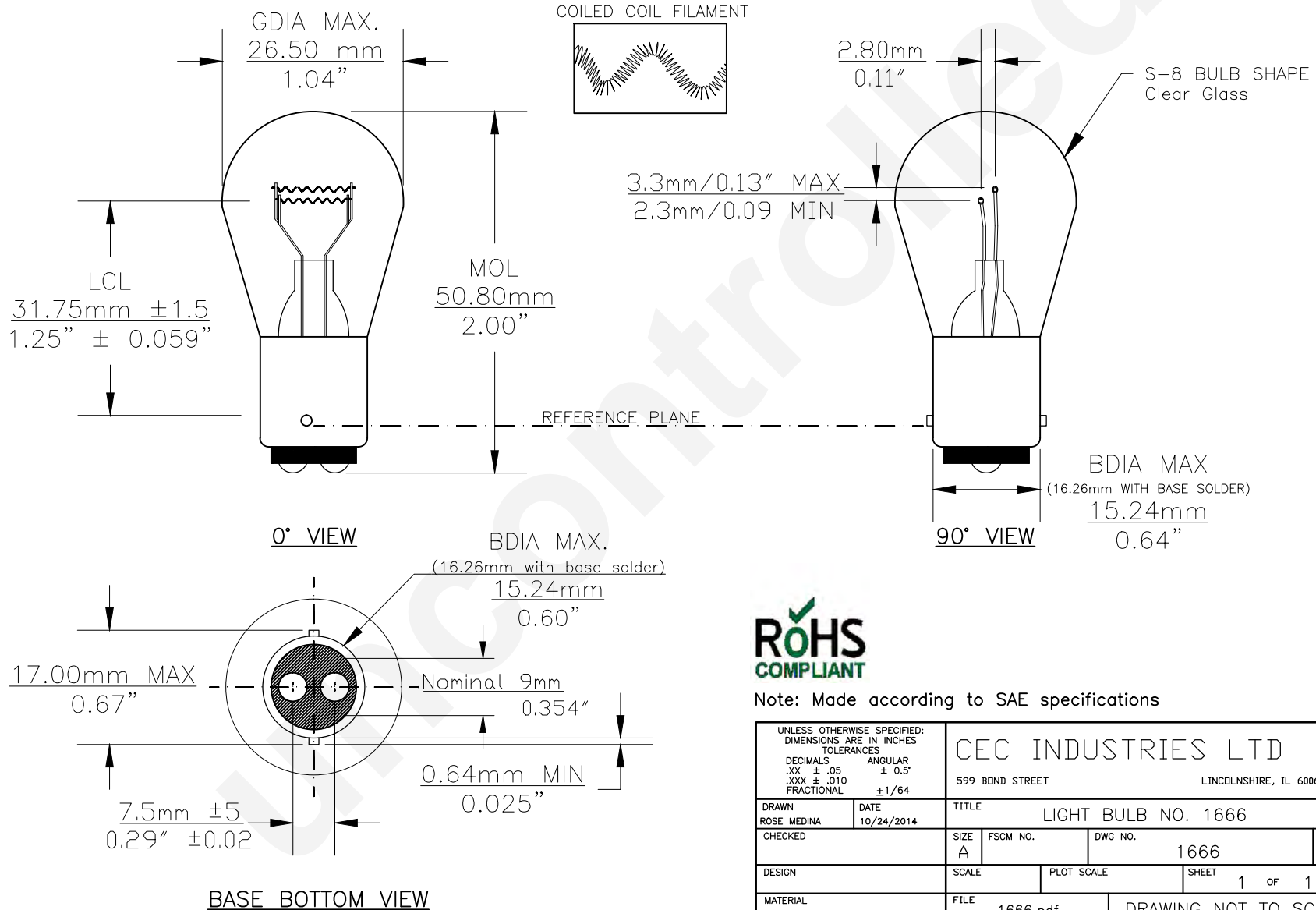




PART NO.	BASE TYPE	DESIGN VOLTS	DESIGN AMPS	MSCD	FILAMENT TYPE	AVERAGE LIFE HOURS	REVISIONS			
							REV #	DESCRIPTION	DATE	APPROVED
1666	D.C. BAYONET (BA15d)	28.0V 28.0V	0.63±10% 0.63±10%	21±15% 21±15%	CC-6 CC-6	300 300	1	ISSUED	10/24/2014	R.M.



Note: Made according to SAE specifications

UNLESS OTHERWISE SPECIFIED: DIMENSIONS ARE IN INCHES TOLERANCES		CEC INDUSTRIES LTD			
DECIMALS .XX ± .05		599 BOND STREET		LINCOLNSHIRE, IL 60069	
ANGULAR .XXX ± .010		TITLE LIGHT BULB NO. 1666			
FRACTIONAL ±1/64		CHECKED	DATE 10/24/2014	SIZE A	FSCM NO. 1666
DRAWN ROSE MEDINA		DWG NO. 1666		REV 1	
DESIGN		SCALE	PLOT SCALE	SHEET 1 OF 1	
MATERIAL		FILE 1666.pdf	DRAWING NOT TO SCALE		