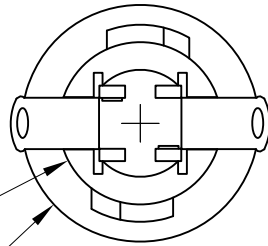


PART NO.	BASE TYPE
T20	PRINTED CIRCUIT

REVISIONS			
REV	DESCRIPTION	DATE	APPROVED
1	ISSUED	03/16/2005	D.C.
2	TOP & SIDE VIEW REVISED BULB INSERT ORIENTATION	09/16/2011	D.C.

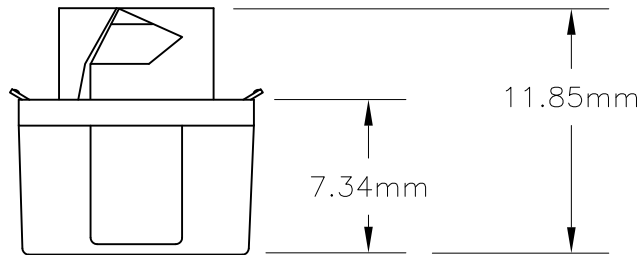
ACCEPTS T1-3/4 BULBS



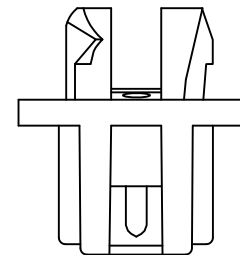
TOP VIEW

DIA 7.89mm

DIA 11.30mm



FRONT VIEW



SIDE VIEW

UNLESS OTHERWISE SPECIFIED: DIMENSIONS ARE IN INCHES TOLERANCES		CEC INDUSTRIES LTD			
DECIMALS .XX ± .05 .XXX ± .010 FRACTIONAL ± 1/64		599 BOND STREET		LINCOLNSHIRE, IL 60069	
ANGULAR ± 0.5°		TITLE PRINTED CIRCUIT SOCKET T20			
DRAWN D.C.	DATE 3/16/2005	SIZE A	FSCM NO.	DWG NO. T20	REV 2
CHECKED		SCALE	PLOT SCALE	SHEET 1 OF 1	
DESIGN		FILE T20.dwg	DO NOT SCALE DRAWING		