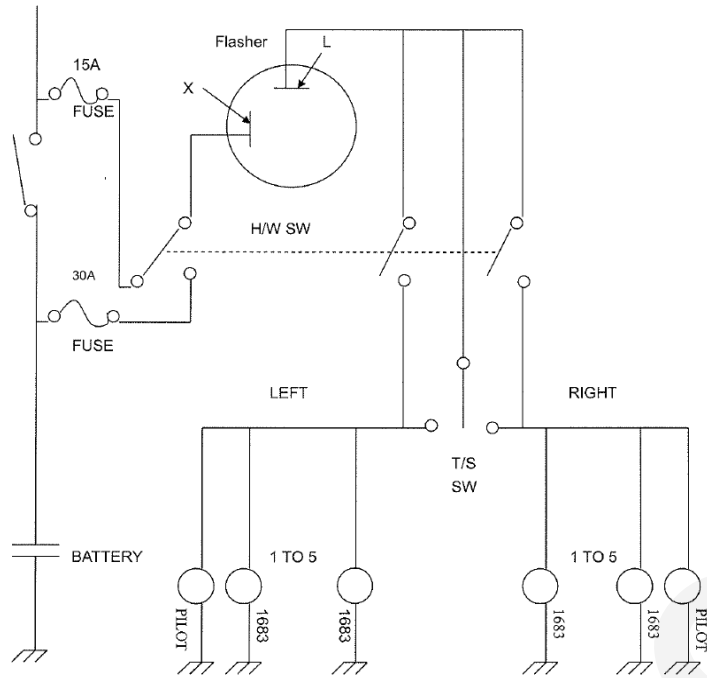


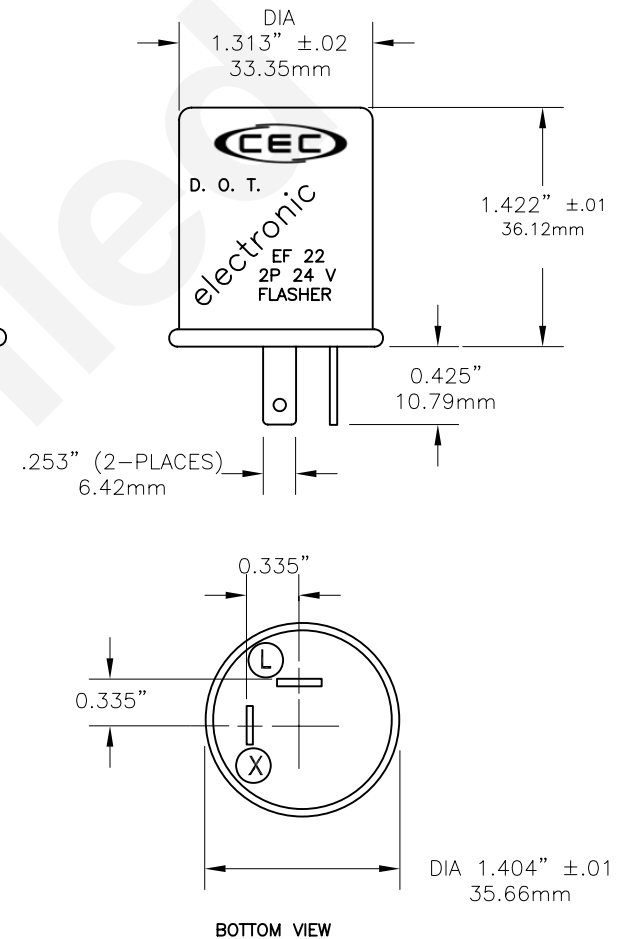
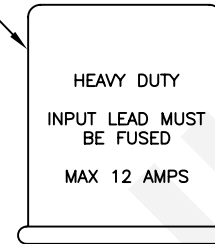
PART NO.	NO. OF TERMINALS	TYPE	STYLE	VOLTS
EF22	2	VARIABLE LOAD	ROUND	24

REVISIONS			
REV	DESCRIPTION	DATE	APPROVED
1	ISSUED	2/07/2008	D.C.

EF22 CIRCUIT DIAGRAM



TEXT
(BACK VIEW)



Specifications: FMVSS 108 SAE J590 J945 & J1690 Class A

Shell Construction: Plastic

Rated Load: 1 to 10 lamps / 12 Amps. MAX

Lamp Ratings: No. 1683, 1.02 Amps at 24 Volts

Temperature Operating Range: -25°F to 140° F

Rated Voltage: 22 to 30 Volts DC.

128° F 22 to 26 Volts

78° F 25.6 Volts

0° F 22 to 26 Volts

Voltage Drop at Rated Current: 500 mv

Time to First Flash: Less than 1.5 seconds.

Flash Rate over Temperature Range: 60 to 120 Flashes Per Minute

Duty Cycle: 30% to 75%

Electrical Source: 15 Amps. Fused circuit recommended.

L Terminal = Load (Lamp Output)

X Terminal = Battery (Power Input)

UNLESS OTHERWISE SPECIFIED:
DIMENSIONS ARE IN INCHES
TOLERANCES

DECIMALS	ANGULAR
.XX ± .05	± 0.5°
.XXX ± .010	
FRACTIONAL	± 1/64

CEC INDUSTRIES LTD

599 BOND STREET

LINCOLNSHIRE IL 60069

TITLE

ELECTRONIC FLASHER EF22

DRAWN
D.C.

DATE
02/07/2008

CHECKED

SIZE

A

FSCM NO.

DWG NO.

EF22

REV
1

DESIGN

SCALE

PLOT SCALE

SHEET 1 OF 1

MATERIAL

FILE

EF22.dwg

DO NOT SCALE DRAWING